

# velocity™ by Atlona

## Integration Note for Artistic License

## Version Information

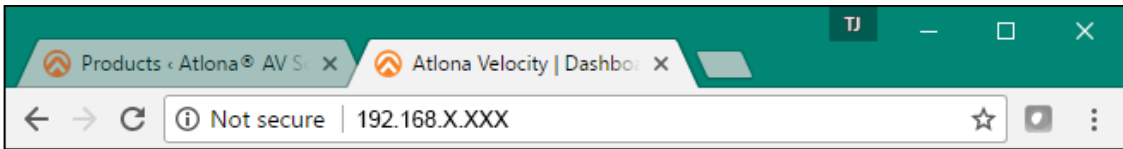
---

Version	Release Date	Notes
1	Sept 2021	Initial release

# Integration Note

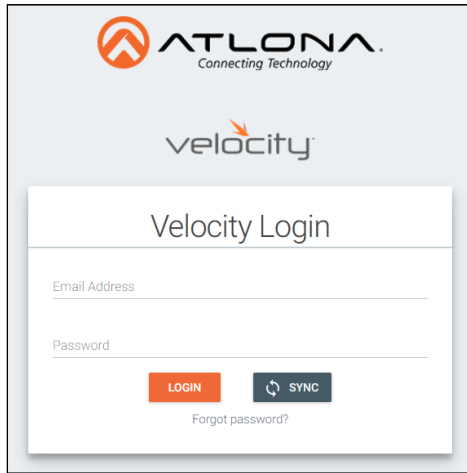
Velocity is an easy to use control system, designed to ensure all devices can be integrated into a system without a large amount of programming needed. Velocity provides an easy way to set up and control Artistic License lighting devices.

1. Once all the devices are on the network and their IPs found, open a browser on a local network computer.
2. Type Velocity's IP address into the current address bar.

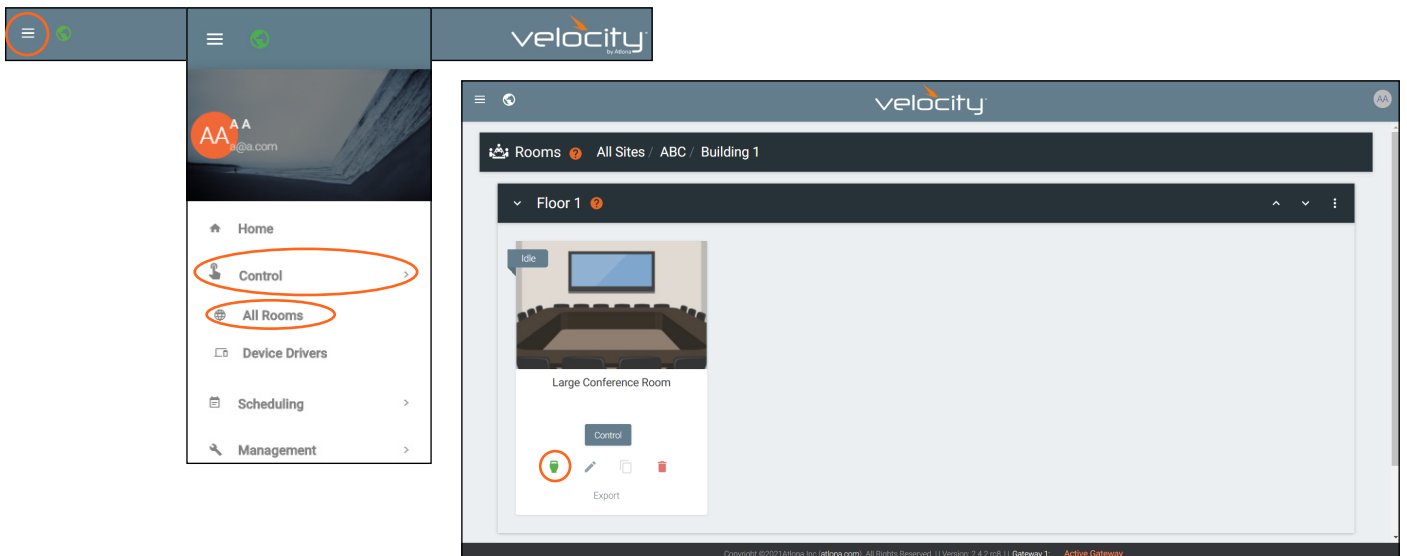


3. Log into Velocity. A new screen will open.

**NOTE:** It is best to have set up Velocity before starting integration. If Velocity has not been set up at this time, download the manual from <https://atlona.com/pdf/manuals/Velocity.pdf> and follow the setup instructions.

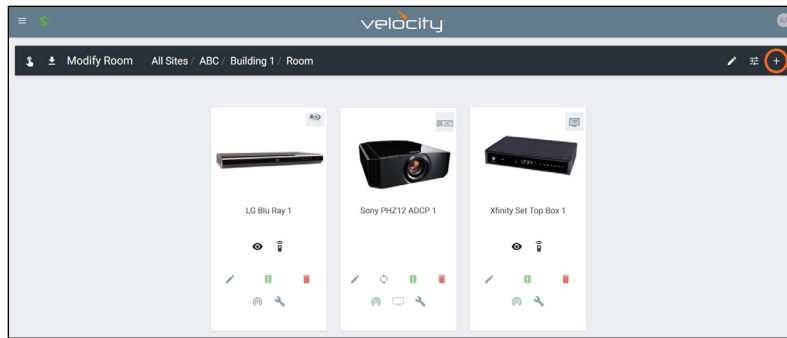


4. Select the = button at the top right corner to open the navigation.
5. Select **All Rooms** from the control menu.



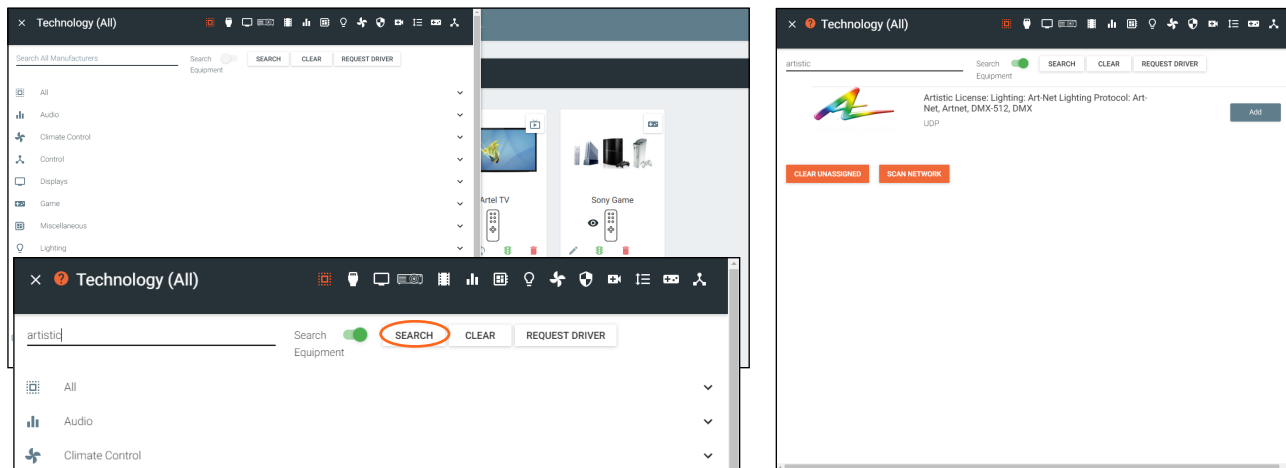
6. Select **Edit Room Technology** for the room the Artistic License will be located.

6. Once the Modify Room page is open, select the + button. A new navigation will slide open.



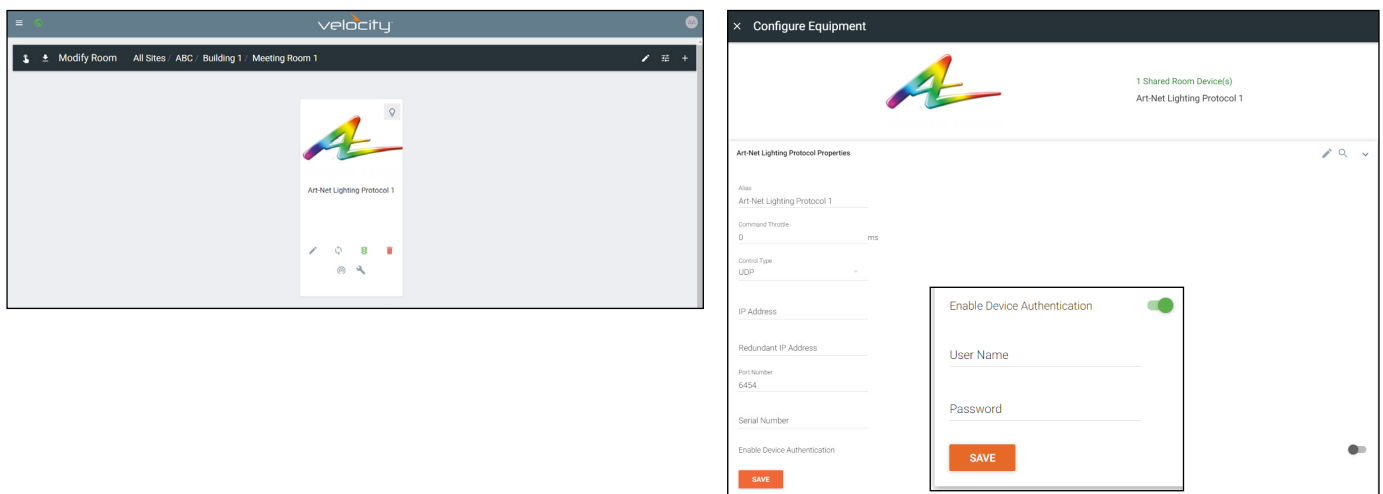
7. Type Artistic License or Art net into the search field and press enter or the SEARCH button.

8. Select the **Add** button next to Artistic License: Art net. The Art-Net tile will appear in the room.



9. Click outside the device menu or select the X next to Technology to close the menu.

10. Select the edit button on the Art-Net tile. A new menu will slide open on the left side of the screen.

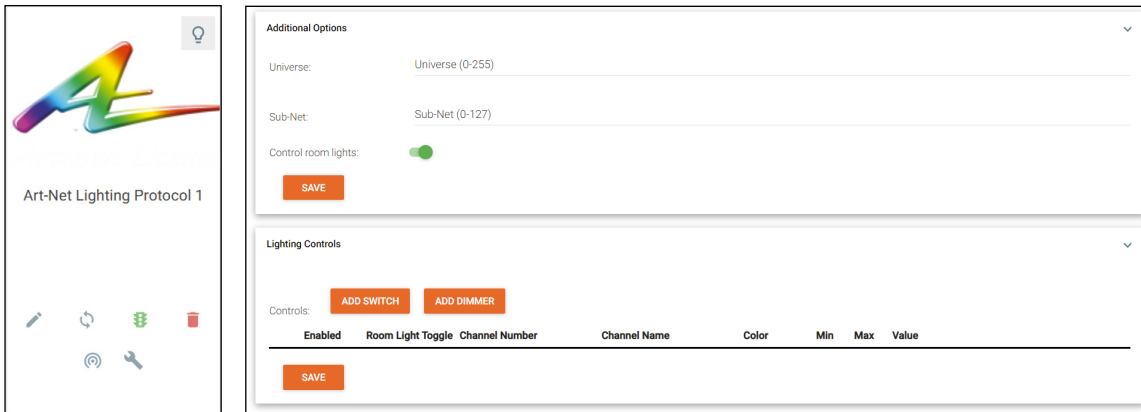


11. Enter the IP address, Control Type, Port number, Serial, and Command Throttle (in milliseconds).

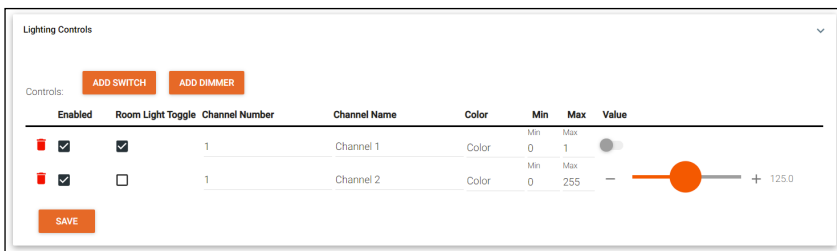
12. \*Optional\* Select the Enable Device Authentication slider. New options will appear. Enter the device username and password.

13. Select **SAVE**. The edit screen will close.

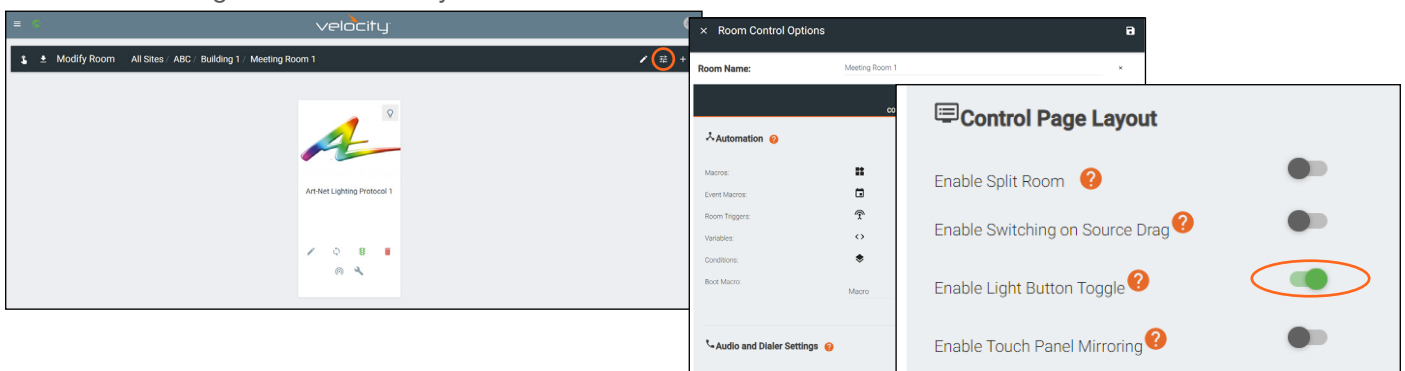
14. Select **Edit** (pencil) on the Art-Net tile. The options will open again.
15. Scroll to the Additional Options section.
16. Enter in the **Universe** (between 0 and 255) and **Sub-Net** (between 0 and 127).
17. Ensure the Control room lights slider is enabled. If this is grey, select it to turn green.
18. Press **Save**. The edit screen will close.



19. Select **Edit** (pencil) on the Art-Net tile. The options will open again.
20. Scroll to the Lighting Controls section.
21. Add a lighting control, either Switch or Dimmer.
22. Once the control is added, select the enable checkbox to make the control available.
23. Enter the Channel Number, Channel Name, Color, Min, Max, and select the room light toggle checkbox if the value going from min to max when the room light control is selected is desired.
24. Repeat for all switches/dimmers and channels as needed.
25. Select save. The edit screen will close.



26. Select Room Options at the top right side of the page. A menu will slide open on the left side of the screen.
27. Scroll down to the Control Page Layout section.
28. Select the Enable Light Button Toggle. This will enable the toggle ability within the control screen.
29. Close the Room Control Options by either clicking off the menu into the room or selecting the X in the top left corner. Settings will automatically save when closed.



## Integration Note

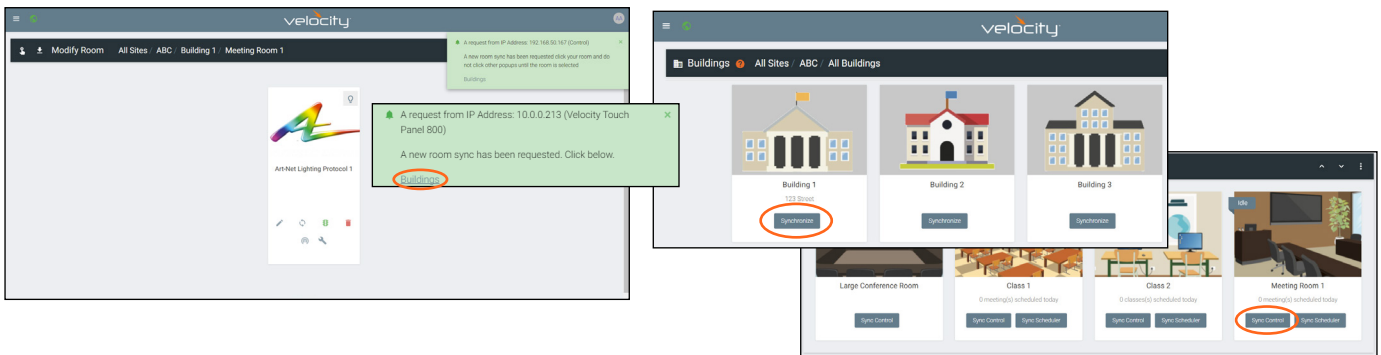
30. Add a control device to the room, either a separate browser or a VTP panel. If using a browser, type Velocity's IP address into the new browser (do not use the same browser as this will just log back into Velocity) and select Sync on the login page.



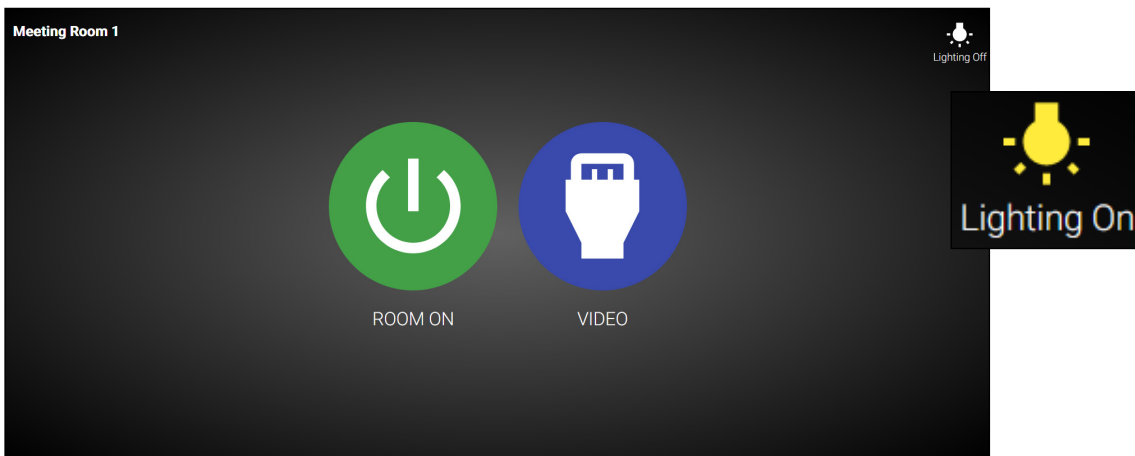
31. A green message will appear at the top right corner of the Modify Room screen for the control device. Select **Buildings**. A screen with all the site buildings will open.

32. Select Synchronize on the building the control panel is in. The building floors will appear.

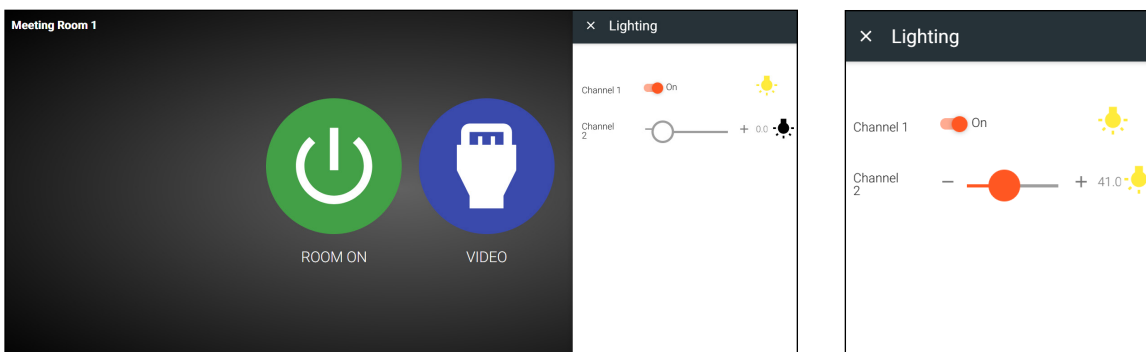
33. Select Sync Control on the room for the control panel. The new tile will be added to the room.



The Artistic License lighting device is now ready to use and can be controlled through the browser or touch panel.



With lighting toggle turned on, simply press the Lighting On button in the top left corner of the screen. This will turn on all channels that were toggle enabled. The icon will turn Yellow when on.



Press and hold the Lighting On button until the Lighting menu opens. This should take 3 to 5 seconds. All lighting controls will appear in the menu. If the control is at minimum it will display a black icon, if on, it will display yellow.

## Copyright, Trademark, and Registration

© 2021 Atlona Inc. All rights reserved. “Atlona” and the Atlona logo are registered trademarks of Atlona Inc. Pricing, specifications and availability subject to change without notice. Actual products, product images, and online product images may vary from images shown here.

All other trademark(s), copyright(s), and registered technologies mentioned in this document are the properties of their respective owner(s).