

# velocity™

by Atlona

Integration Note for

**KNX**

## Version Information

---

Version	Release Date	Notes
1	Dec 2023	Initial release

## Integration Note

---

Velocity is an easy to use control system, designed to ensure all devices can be integrated into a system without a large amount of programming needed. Velocity provides an easy way to set up and control KNX devices.

Before integrating the devices with Velocity, the device and Velocity must be set up.

Set up for KNX must be done through their ETS software by an Electrician.

Set up instructions for Velocity Software can be found at <https://atlonac.com/pdf/manuals/Velocity.pdf>. Depending on the Velocity device mounting/installation can be found on the product SKUs page.

AT-VGW-SW: <https://atlonac.com/product/at-vgw-sw/>

AT-VGW-HW: <https://atlonac.com/product/vgw-hw/>

AT-VTPG-1000VL: <https://atlonac.com/product/vtpg-1000vl/>

### Velocity

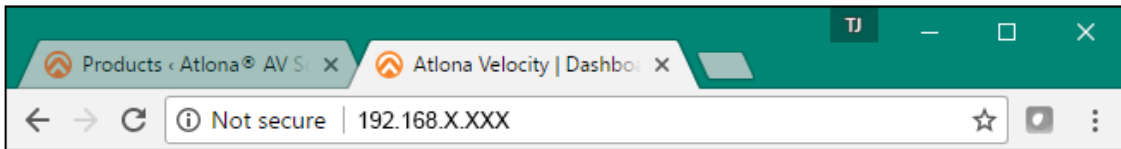
- Velocity should be on the latest firmware.
- Site, building, and room should be set up.
- Velocity should have an active network connection and be on the same network as the KNX device.
- Notate the IP of the KNX device for set up.

### KNX

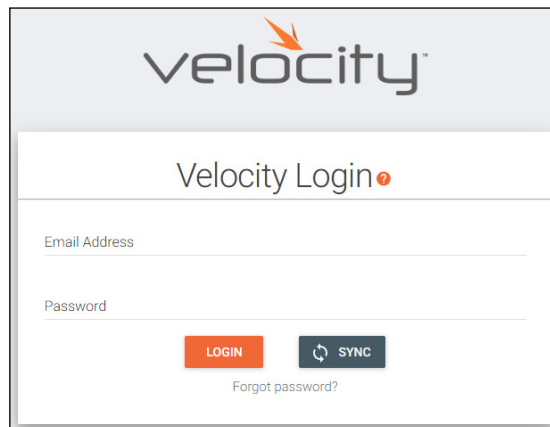
- Have an electrician set up the KNX through ETS.
- Notate the IP of the KNX device for set up.

## Velocity Setup and Integration

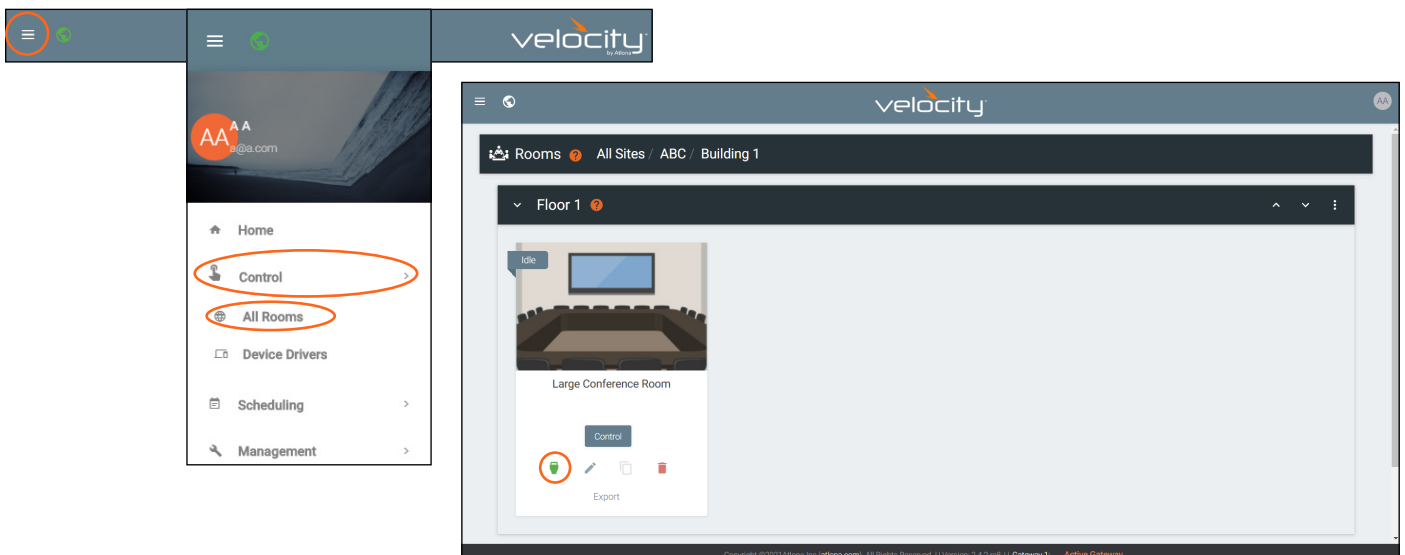
1. Once all the devices are on the network and their IPs found, open a browser on a local network computer.
2. Type Velocity's IP address into the current address bar.



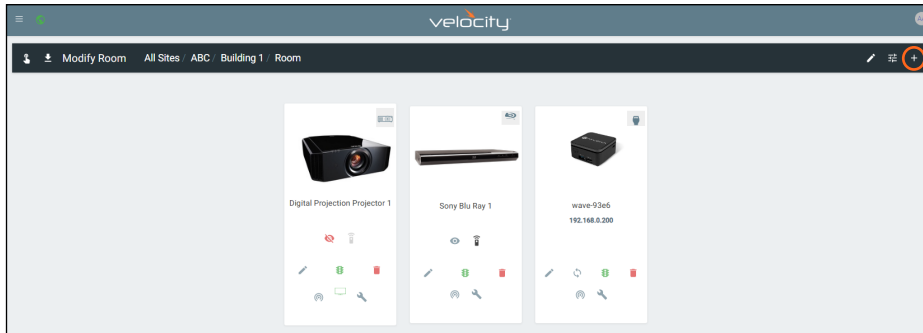
3. Log into Velocity. A new screen will open.



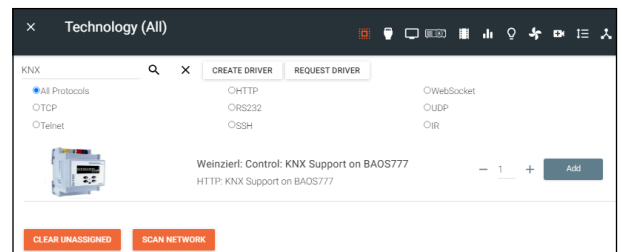
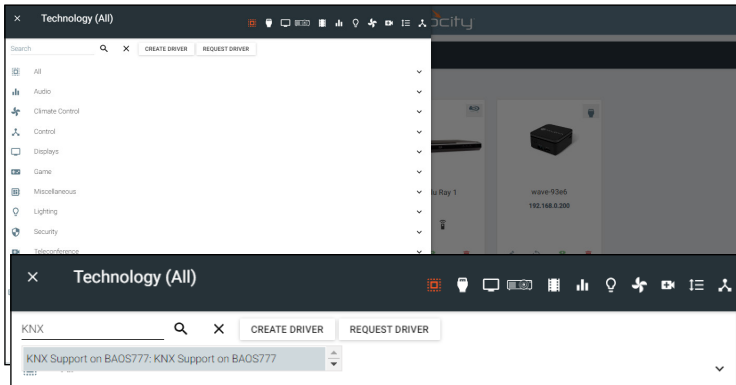
4. Select the = button at the top right corner to open the navigation.
5. Select **All Rooms** from the control menu.



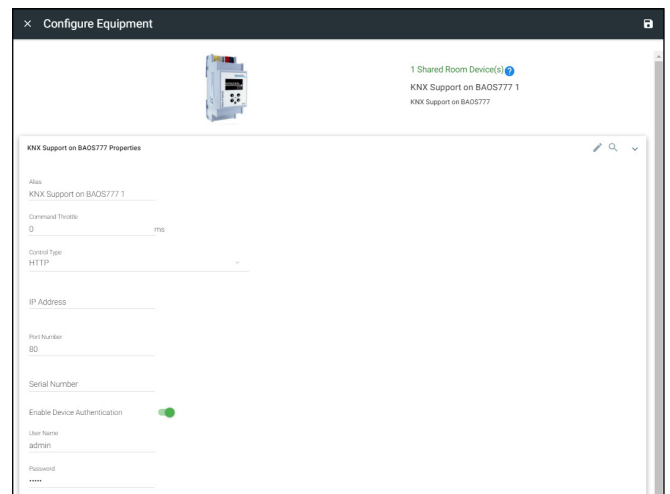
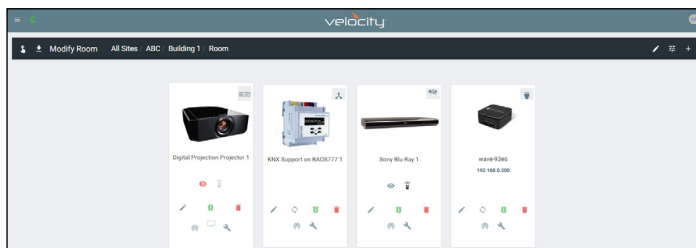
6. Select **Edit Room Technology** for the room the KNX will be located.
7. Once the Modify Room page is open, select the + button. A new navigation will slide open.



8. Type KNX into the search field and press enter or select KNX Support on BAOS777 from the drop down.
9. Select the **Add** button next to Weinzierl: Control: KNX Support on BAOS777. The KNX tile will appear in the room.
10. Click outside the device menu or select the X next to Technology to close the menu.

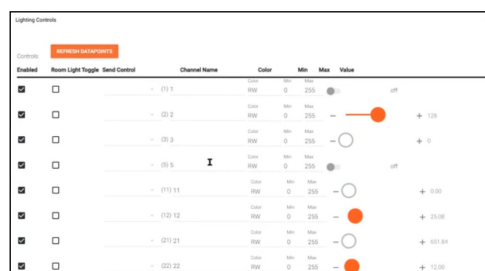


11. Select the edit button on the KNX tile. A new menu will slide open on the left side of the screen.
12. Enter the IP Address of the KNX into the IP Address field.



13. Select **SAVE**. The edit screen will close.

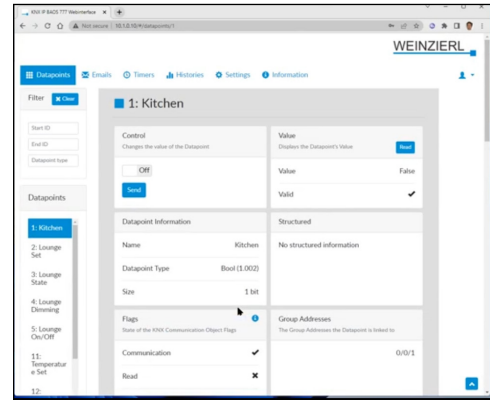
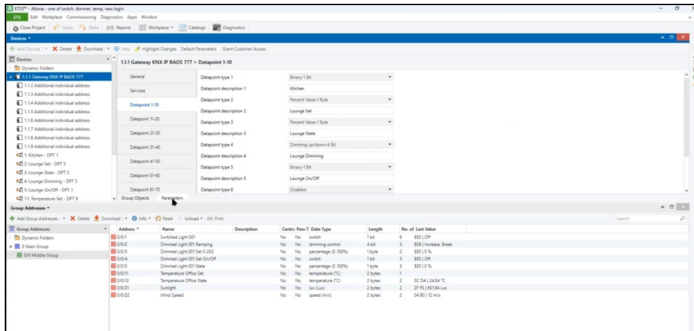
KNX will automatically sync all commands that were previously set up by the electrician in ETS.



## Velocity Control

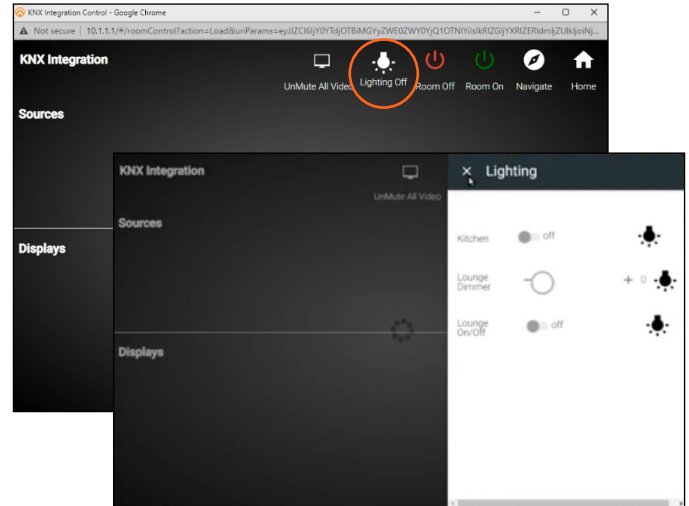
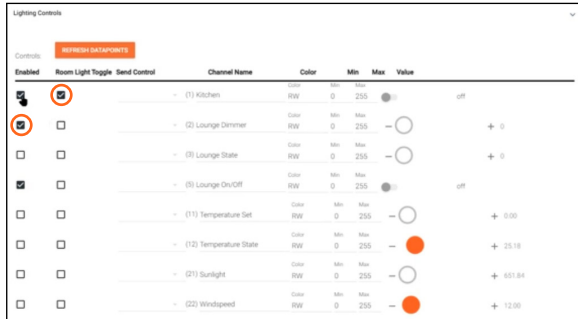
Control using Velocity can be done in multiple ways: through macros or through custom UI controls.

When setting up either type of control, the control ID number, which can be found in the KNX webUI or ETS software, will be needed.

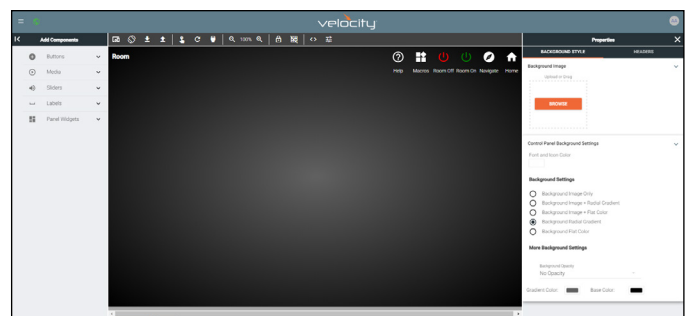
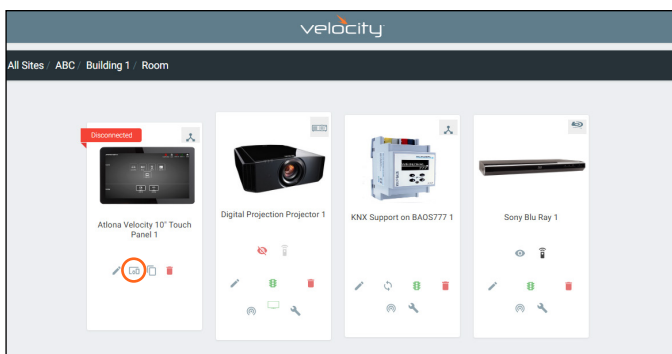


For the lighting icon on the default control screen, the options can be selected on the KNX edit screen. Within the lighting controls there are two sets of checkboxes per commands.

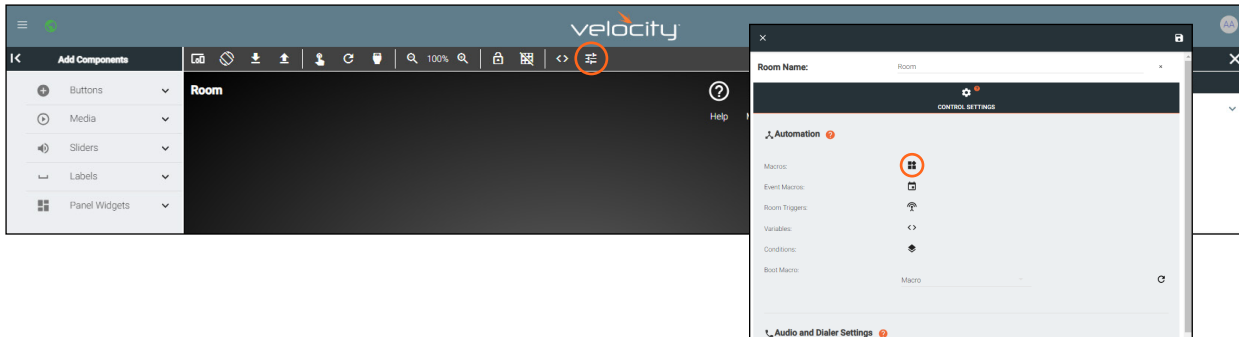
- **Enabled** checkbox - When selected, the command will display within the lighting controls menu opened on a long press of the lighting icon on the control page.
- **Room Light Toggle** checkbox - When selected, the command will be triggered on quick press of the lighting icon.



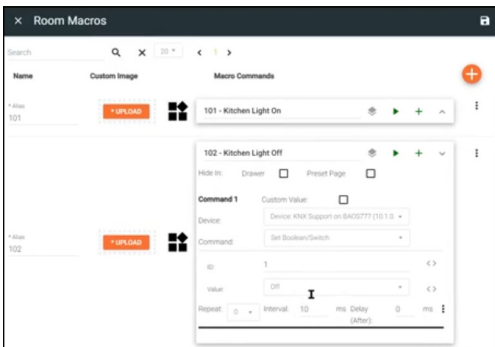
If more than the default control page is required, a custom UI can be created. In this case, a VTP has been added to the room for control (it can also be done with 3rd party panels or within a browser on the same network). Select the Custom UI icon.



If more than the default control page is required, a custom UI can be created. In this case, a VTP has been added to the room for control (it can also be done with 3rd party panels or within a browser on the same network). Select the Custom UI icon.

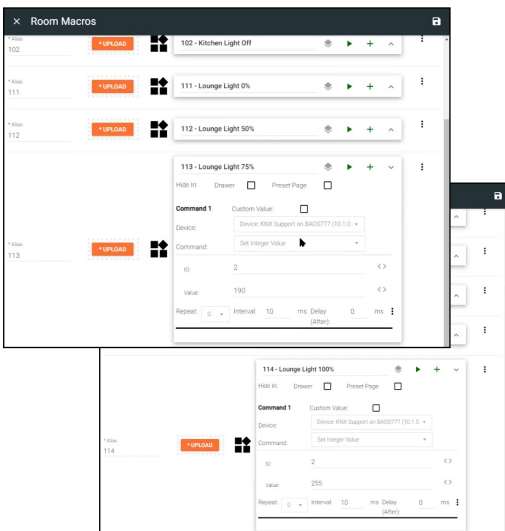


To set up presets, sliders, or buttons, macros will need to be created. Select the room options icon and then Macros. Once macros are open, set up any type of macros needed. Below are a few options on how to set up different presets and a toggle. The control ID numbers from the web GUI or ETS software will be needed for set up.



### Toggle light off

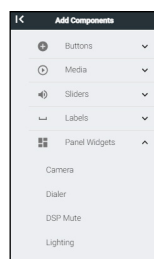
- Select the KNX device from the Device drop down menu
- Select the command type (for the toggle it should be set to Boolean/Switch)
- Select the ID to correspond with the device parameters ID number
- Set the Value of command. In this case Off to set the macro to turn off the light.

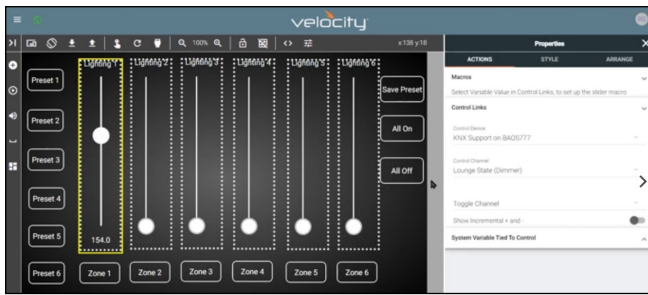


### Lighting Preset Value

- Select the KNX device from the Device drop down menu
- Select the command type (for a preset dim amount on the light set to Set Integer Value)
- Select the ID to correspond with the device parameters ID number
- Set the Value of command. In these cases 255 will set the light to 100% light and 190 will set the light at 75% brightness.

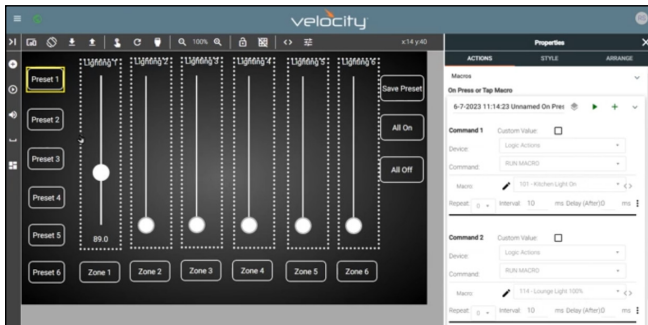
A quick way to set up a lighting page, select Lighting from the Panel Widgets options. This will create multiple sliders and preset buttons. Once created, the sliders and buttons will need to be set up.





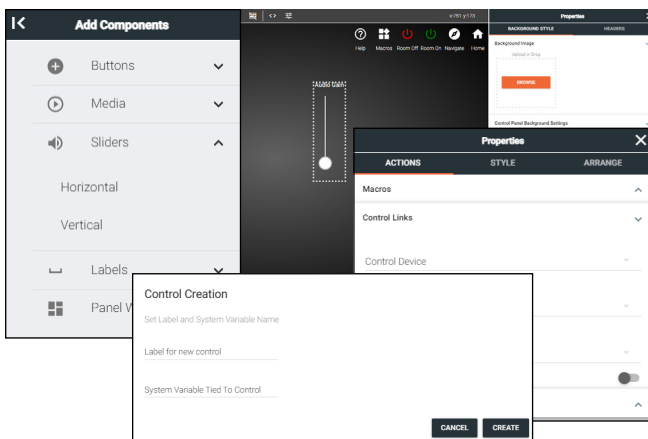
Select the slider from the side menu. Properties will open on the right side of the screen. Expand the Control Links section to link the slider to a specific lighting device within a room.

- Select KNX from the Control Device drop down menu.
- Select the Control Channel from the drop down. In this case the Lounge State (Dimmer) is set to the slider.



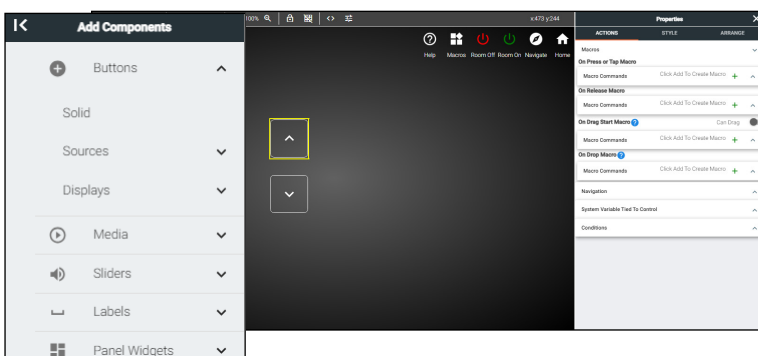
Select a Preset button to trigger on/off, specific percentage light values, or other commands.

- Select Logic Actions from the Device drop down.
- Select Run Macros from the Command drop down.
- Select the corresponding Macro to the needed command.
- \*Optional\* If needed, select another macro to be triggered when the button is selected.



Select Horizontal or Vertical from the slider menu. This will add the slider to the control page. The slider can be moved anywhere within the page and will need to be set up for control.

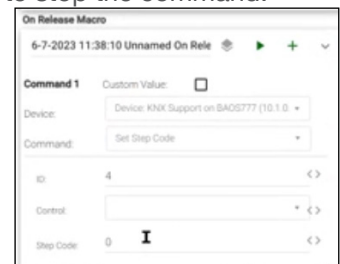
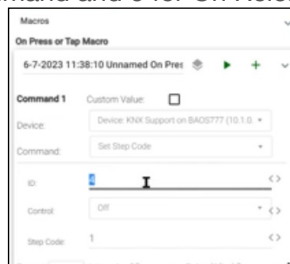
- Expand the Control Links section.
- Select KNX from the Control Device drop down menu.
- Select the Control Channel from the drop down. In this case the Lounge State (Dimmer) is set to the slider.



Select a button type to add to the control page. Use the following options to set a ramp command to each button. There will need to be an On Press and On Release command set up.

- Select + on the On Press/Tap Macro or On Release section.
- Select the KNX from the device drop down.
- For ramp buttons, select Set Step Code from the Command drop down menu.
- Set the ID to match the room/device as found inside the KNX GUI or ETS software.

- Select the Control type as On/Off for the On Press section. On Release does not require a control type.
- Set the step code to 1 for On Press to start the command and 0 for On Release to stop the command.



Set up as many controls as needed, matching control type, ID numbers, and command parameters. Once completed, the KNX is ready to be used with Velocity.



## Copyright, Trademark, and Registration

© 2023 Atlona Inc. All rights reserved. "Atlona" and the Atlona logo are registered trademarks of Atlona Inc. Pricing, specifications and availability subject to change without notice. Actual products, product images, and online product images may vary from images shown here.

All other trademark(s), copyright(s), and registered technologies mentioned in this document are the properties of their respective owner(s).